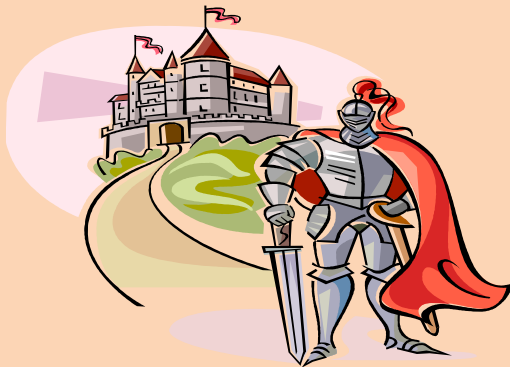
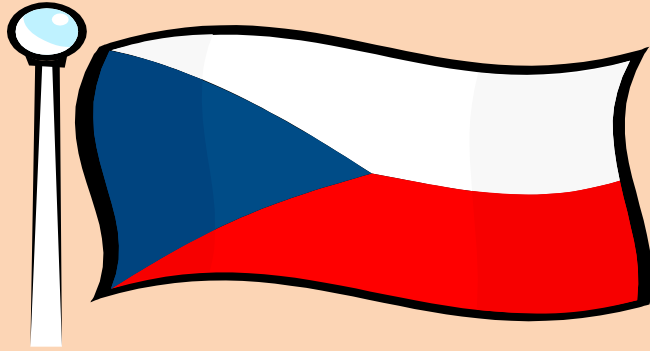


INVESTICE DO ROZVOJE VZDĚLÁVÁNÍ

Škola:	Střední škola obchodní, České Budějovice, Husova 9
Projekt MŠMT ČR:	EU PENÍZE ŠKOLÁM
Číslo projektu:	CZ.1.07/1.5.00/34.0536
Název projektu školy:	Výuka s ICT na SŠ obchodní České Budějovice
Šablona III/2:	Inovace a zkvalitnění výuky prostřednictvím ICT
Číslo šablony:	VY_32_INOVACE_ANJ_737
Předmět:	Anglický jazyk
Tematický okruh:	Poznatky o zemích
Autor, spoluautor:	Mgr. Miroslava Hlavínová
Název DUMu:	The Czech heritage sites
Pořadové číslo DUMu:	17
Stručná anotace:	
Prezentace je zaměřena na získání, procvičení a upevnění znalostí reálií (Česká republika). Další možné využití je v rozhovoru o památkách v naší republice v rámci světového dědictví .	
Ročník:	3 .
Obor vzdělání:	65-42-M/02 Cestovní ruch
Metodický pokyn:	Tato prezentace v MS PowerPoint slouží k výkladu a nácvičku dané problematiky.
Výsledky vzdělávání:	Žáci získávají a aktivně procvičují faktografii dané země a na základě kontroly dle uvedeného klíče si mohou doplnit své nedostatečné znalosti. Obrázková část může být vhodně použita na podporu jejich řečových dovedností.
Vytvořeno:	6.9.2013
Určeno pro:	3CR
Pokud není uvedeno jinak, uvedený materiál je z vlastních zdrojů autora.	

THE CZECH HERITAGE SITES



PRAGUE

**THE JEWISH QUARTER
AND St.PROCOPIUS 'BASILICA IN TŘEBÍČ**

HOLAŠOVICE

ČESKÝ KRUMLOV

KUTNÁ HORA

***THE LEDNICE-VALTICE
CULTURAL LANDSCAPE***

LITOMYŠL CASTLE

TELČ

***KROMĚŘÍŽ CASTLE
AND GARDENS***

**THE HOLY TRINITY COLUMN
IN OLOMOUC**

THE PILGRIMAGE CHURCH AT ZELENÁ HORA

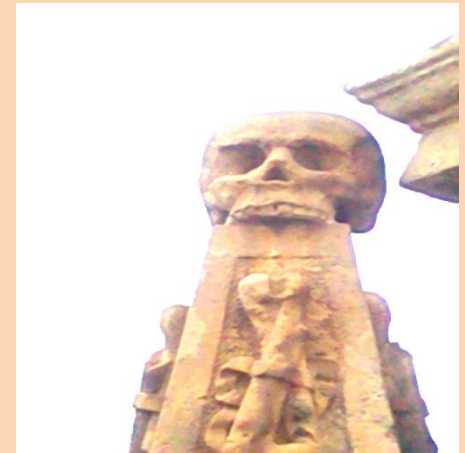
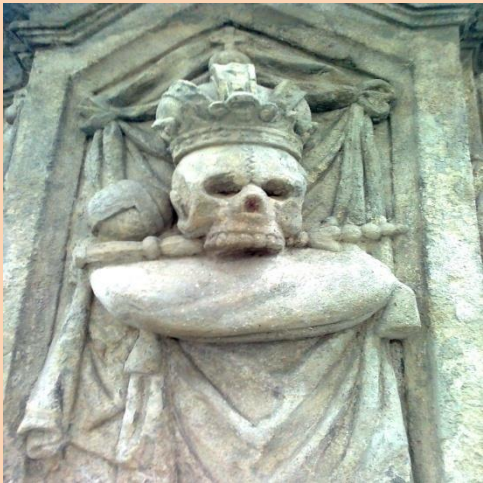
PRAGUE - historical, cultural and political centre of the Czech Republic has many buildings and places of architectural importance like Prague Castle, St.Vitus' Cathedral, the Valdštejn Palace, the Jewish Quarter, the Charles Bridge or the Old Town Square. The city is full of various architectural styles, including Gothic, Renaissance, Baroque, art nouveau and functionalism. Some world famous people like Mozart, Čapek, Kafka lived or worked there, too.

HOLAŠOVICE- south Bohemian place with farmhouses that are located around a pond in the centre of a small village green. These houses are unique in their special design, walls, arched entrance gates and decorated front facades. This style is called 'Peasant Baroque'.

ČESKÝ KRUMLOV- a town located near the Vltava River banks, one of the Central European cities that has its original amazing atmosphere. Places that are the most visited ones are the Gothic St.Vitus' Church, the Renaissance town hall and the large castle with its beautiful gardens and unique revolving theatre.



KUTNÁ HORA - in the past it was a very wealthy city because of its silver mines . Its wealth is still reflected in the magnificent Gothic Cathedral of St. Barbara or in the city buildings. It is one of the most morbid historical places in the Czech Republic because the vicinity of the All Saints Chapel is decorated with human bones that are meant to inspire people towards a spiritual life.



KROMĚŘÍŽ CASTLE AND GARDENS

- the Baroque garden and some of the castle rooms and halls are connected with well-known Miloš Forman's film Amadeus. The local gardens played an important role in the development of Central European Baroque gardens so Kroměříž is called 'the garden city'.



Telč - South Bohemian city famous for its well-preserved beautiful town square and its Renaissance chateau, the Baroque Marian column, a monument to the Virgin Mary and nearby fountain. The facades of the houses were built by masters from Northern Italy. Perhaps even more interesting fact is that every second house used to serve its own beer.

THE PILGRIMAGE CHURCH AT ZELENÁ HORA - is called St. John of Nepomuk Church. It shows the change from Gothic to Baroque architecture. The legend says that the priest John of Nepomuk refused to tell the king the queen's confession. In revenge for keeping the secret he was thrown from the Charles Bridge into the Vltava River in 1393.

Quiz

1. *What town is called 'the garden city'?*
2. *What monuments can we find in Telč?*
3. *Where can we find houses built in 'Peasant Baroque'?*
4. *Who was John of Nepomuk and what place is he connected with?*
5. *What styles of architecture can we find in Prague?*
6. *What is the name of the magnificent cathedral in Kutná Hora?*
7. *What unique construction is there in Český Krumlov?*

Zdroje obrázků: Klipart sady Microsoft Office